

# Experience Guide



**Gates Foundation**  
Discovery Center

# About this Guide

Visitors can use this guide to help them prepare for a visit to the Discovery Center. Learn about what you will see and what you can do when you visit.

<https://www.discovergates.org/visit/>



Above: Looking across 5th Ave N. to the Discovery Center.

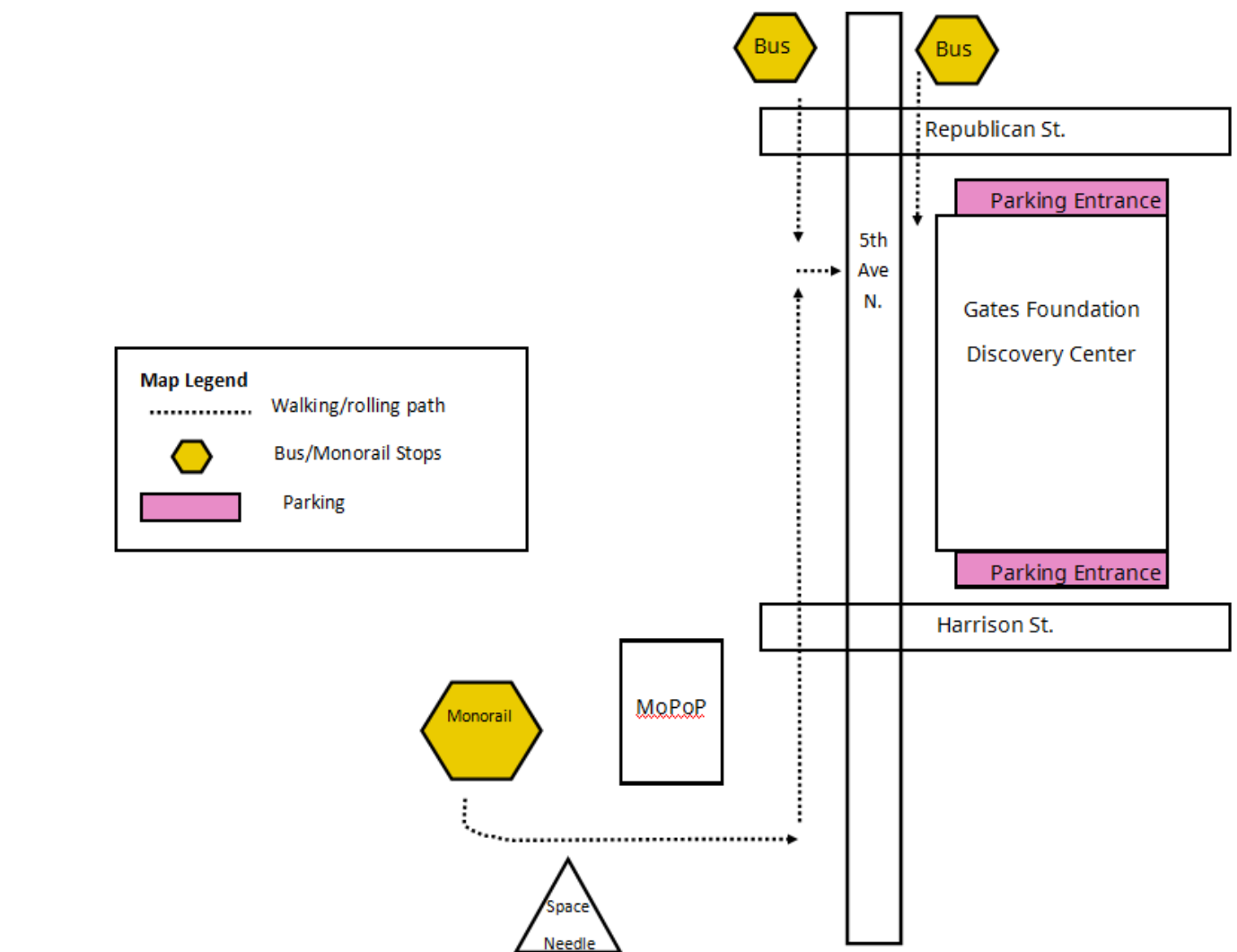
# Contents

Getting to the Discovery Center.....	4
By Car.....	5
By Bus.....	6
By Light rail.....	7
By Monorail.....	8
Entering the Discovery Center.....	9
Wayfinding at the Discovery Center.....	10-11
Restrooms at the Discovery Center.....	12
What will I see .....	13-18
What will I see—Special Exhibition.....	16
Accessibility .....	19

# Getting to the Discovery Center

The Discovery Center is located across the street from Seattle Center and The Space Needle. You can get here by car, light rail, monorail, or by bus. Find out more about transport on our Getting Here page.

<https://www.discovergates.org/visit/getting-here/>



Above: An aerial map diagram of the Discovery Center and surrounding area from above with key landmarks.



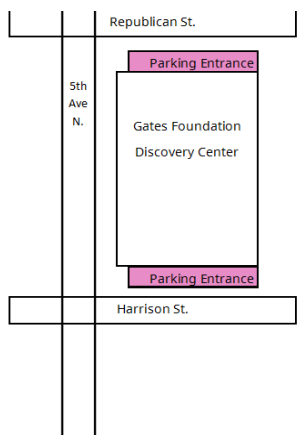
# Getting to the Discovery Center

## By Car

You can park in the Seattle Center Parking Garage which is located behind the Discovery Center. You can enter the garage from Republican Street or Harrison Street. The parking garage has elevators in the southwest corner of the garage and on the north end of the garage. Pricing may vary depending on Seattle Center events.

You may also find street parking nearby and use the Pay By Phone app where required.

A taxi can drop you off in front of the Gates Foundation entrance at 5th Avenue North and Republican Street.



Above left: An aerial map diagram of the Discovery Center and parking garage entrances.



Above right: An image of 5th Ave North Parking Garage, as seen from Republican St.

# Getting to the Discovery Center

## By Bus

The bus stops are located north of the entrance of the Discovery Center. You will walk 179 ft south of the bus stops to get to the entrance.

Both King County Metro lines 3 and 4 stop at 5th Avenue North and Republican Street. Busses are scheduled to arrive every 15 minutes.



Above left: An image of the King County Metro bus stop looking south towards the Discovery Center.



Above right: An image of King County Metro bus line 4 at the southbound Republican St. stop.



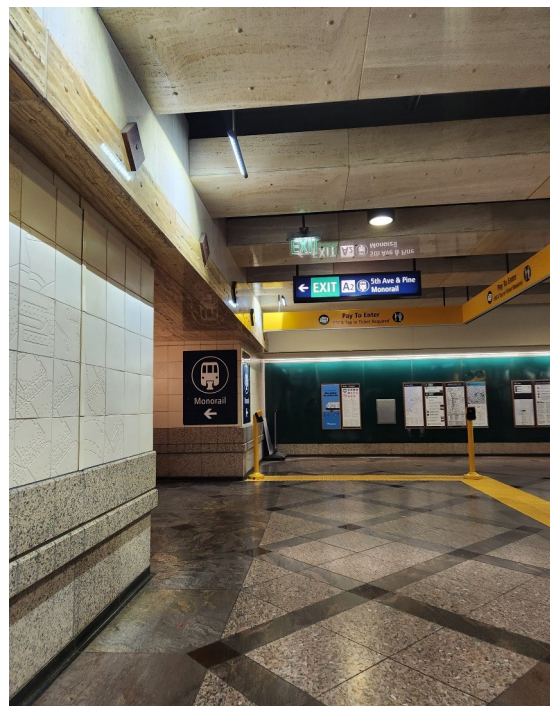
# Getting to the Discovery Center

## By Light rail

To take the light rail, ride the #1 line to Westlake Station. From Westlake Station you can ride the monorail to Seattle Center. From the train platform go up one level. Find your way through Westlake Station, to the Westlake Center mall that is attached to the station. Go through Westlake Center to the third level monorail stop. Or find the elevator and stair case in Westlake Station that will take you to the third floor without entering the mall.



Above left: A photo of the Link light rail at Westlake Station.

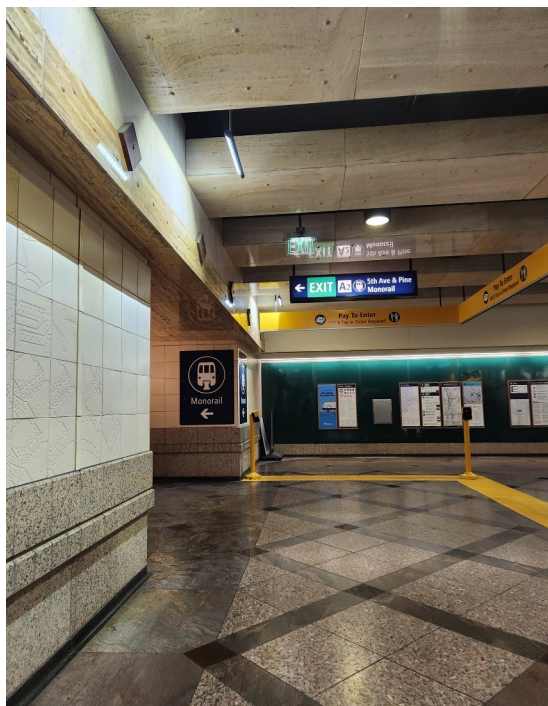


Above right : A view of elevator signage to the Monorail in Westlake Station.

# Getting to the Discovery Center

## By Monorail

Find your way through Westlake Station, to the Westlake Center mall that is attached to the station. Go through Westlake Center to the third level monorail stop. Or find the elevator and stair case in Westlake Station that will take you to the third floor without entering the mall. The monorail will drop you off near the Museum of Pop Culture. The Discovery Center entrance is across the street at the corner of 5th Avenue North and Republican Street.



Above left: A view of elevator signage to the Monorail in Westlake Station.



Above right : A photo of the Monorail at the Seattle Center station.



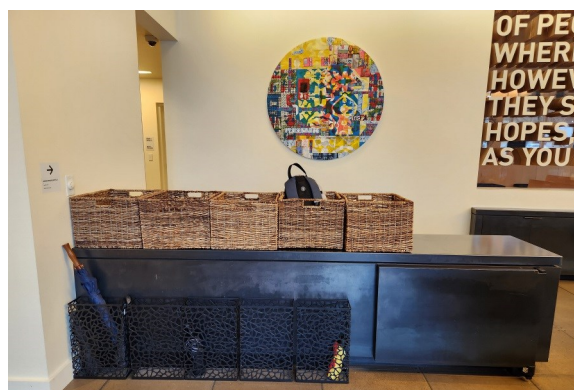
# Entering the Discovery Center

Enter through the double doors where you will be welcomed by a staff person at the desk. If you need assistance opening the doors there is a button to open the doors to the left of the entrance. No fee or tickets are required to visit.

If you would like to store a bag or coat, we provide free storage by the front desk.



Above left: An image of the entrance doors to the Discovery Center.



Above top right: An image of storage at the Discovery Center front desk.



Above bottom right: An image of the front desk and staff greeter.

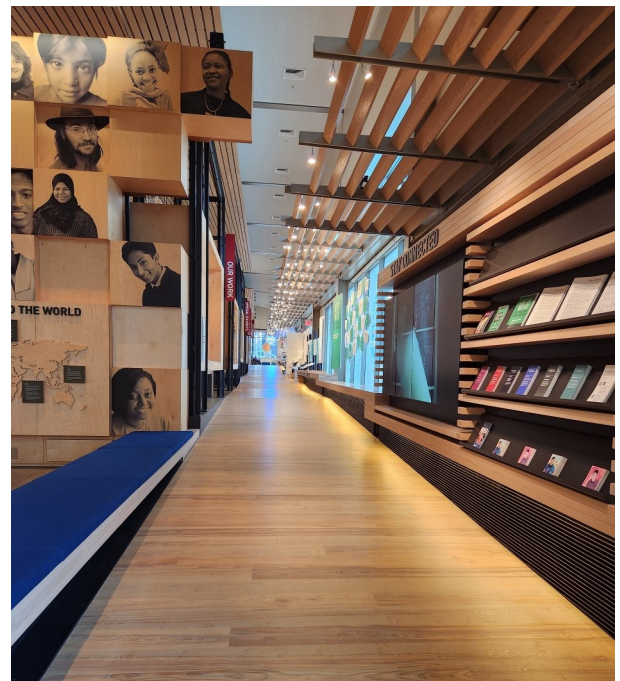


# Wayfinding at the Discovery Center

The Discovery Center is one level. You can move through the space using the stairs or you can move through the space using the ramp.



Above left: Photo of the Discovery Center stairs.



Above right: Photo of the Discovery Center ramp.

# Wayfinding at the Discovery Center

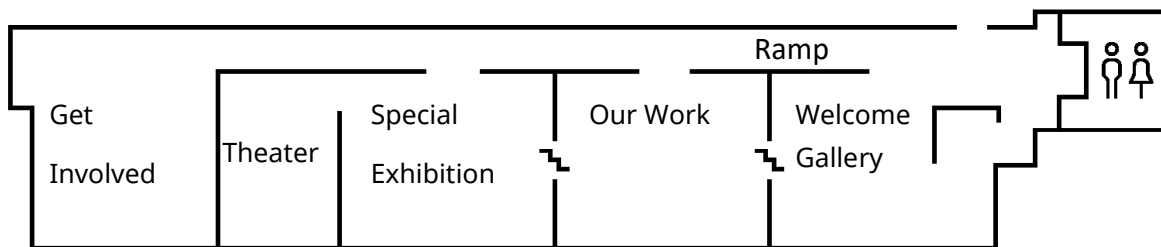
Each gallery has a large name sign along the ramp.



Above left: An image of the “Our Work” gallery sign.



Above right: An image of the “Special Exhibits” gallery sign.



Above: An aerial diagram of the Discovery Center Floor plan.

# Restrooms at the Discovery Center

To the left of the main desk you will find restrooms and water fountains. There is a list of words meaning toilet in different languages on the wall.



Above: An image of the restrooms at the Discovery Center.

We offer an inclusive all gender restroom. We also have women's and men's restrooms. Both the men's and women's restrooms have buttons you can press to open the doors.



Above left: A view of the all gender restroom.



Above Center: A view of the women's restroom.



Above Right : A view of the men's restroom.



# Welcome Gallery - What will I see?

In the Welcome Gallery you can learn about the work of the Foundation through videos of people who work in agriculture, maternal health and fight disease. You can also explore objects related to these areas.

This space has a small theater with several videos that play in a loop. These short videos are a good introduction to the work we do at the Foundation. All the videos are captioned.



Above left: A photo of visitors interacting with videos about maternal health and fighting disease.



Above right: A photo of visitors watching the video playlist in the small theater.

# Our Work – What will I see?

In this gallery you will see our permanent exhibits. These are always here and do not change. You can explore topics like U.S. education, agriculture and health. You can touch various objects, screens and keyboards. You can watch captioned videos in this gallery that play in a loop on various screens to learn more about the exhibits.



Above: A photo of visitors in the Our Work gallery at various hands on exhibits.



# Our Work – What will I see?

There are various ways to interact in this space. There are panels and dials to turn. Screens that can be touched. Blocks that can be picked up. When the gallery is busy it can be loud and crowded.



Above: A visitor places an object onto a screen to see data and learn more.



Above: Visitors push knobs on a microscope to look closely at small objects.

# Special Exhibition - A Better Way to Go – What will I see?

To view the special exhibition start on the ramp to have the best experience.

Right: Photo of the special exhibition start on the ramp.



This special exhibition is focused on sanitation. In the exhibition you will learn about the foundation's work and grants for making new toilets. You will see reinvented toilets, waste treatment tools and other ways to make toilets better for all. There are various captioned videos and objects that you can touch.



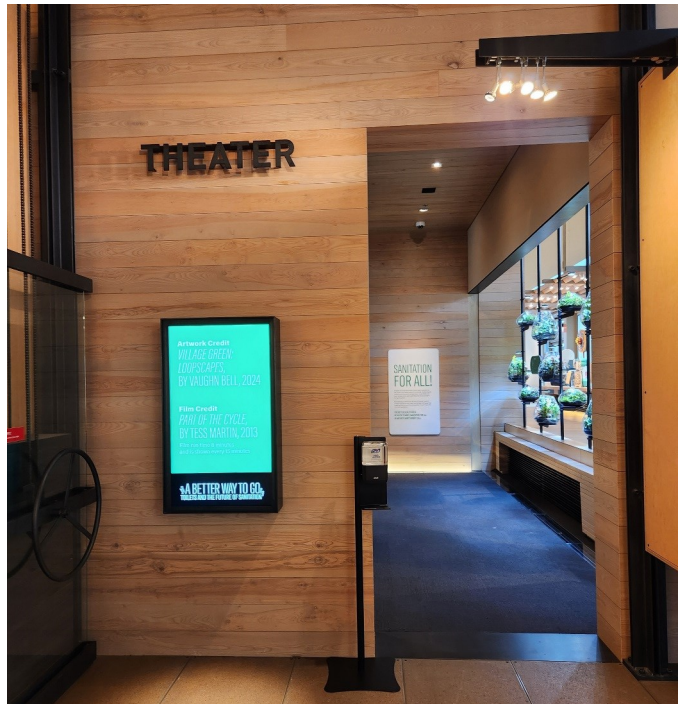
Left: Photo of the special exhibition main room featuring toilets.



# Theater – What will I see?

Our theater is next to the special exhibition room.

Right: Photo of the theater entrance.



Our theater plays captioned videos about the special exhibition. The video currently plays every 15 minutes. It can be loud when the video is playing. The lights do not dim. Sometimes we have exhibits in the theater.

Right: A view looking into the theater from the ramp.



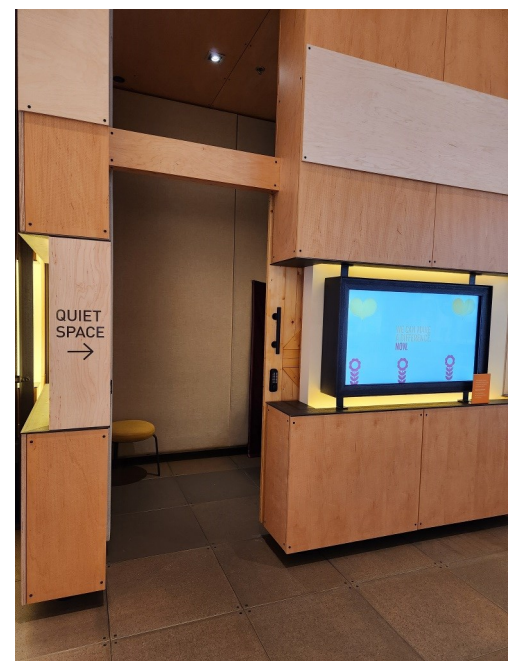
# Get Involved – What will I see?

The last gallery in the Discovery Center is called Get Involved. There are lots of things to do, touch and listen to. When it is busy the gallery can be loud.



Above: A visitor views displays in the Get Involved gallery.

There is a quiet space located in this gallery. Feel free to ask a staff member to use the space if the door is locked.



Above: A view of the quiet space located in the Get Involved gallery.



# Accessibility

The Discovery Center strives to make our space accessible for all. If you need any special accommodations, please notify the front desk or staff on the floor so they can better assist you. Check out our accessibility page to learn what we offer. <https://www.discovergates.org/visit/accessibility/>



Above: Discovery Center staff use hands on objects and printed photos while chatting with visitors.